

MANUFACTURER AND EXPORTER
FASTENERS



Chana Fasteners
EXPERIENCE IMPROVED QUALITY.....

We are manufacturers and exporter of Fasteners & other motion control sub assemblies and components like Shackle Kits, Spring Pins, Axle Shafts, King Pin Set, Equalizer, Hangers and Machined Components.



Chana Fasteners
EXPERIENCE IMPROVED QUALITY.....



ABOUT US

Inception in 2009, We have established ourselves in manufacturing of motion control sub assemblies and components. like Shackle Kits, Spring Pins, Axle Shafts, King Pin Set, Equalizer, Hangers, Fasteners & Machined Components. Our products portfolio caters to variety of fields and applications, ranging from Automotive three wheeler and commercial vehicles, Farm equipment's, off road & Industrial Application. We are focused to implement latest technologies of manufacturing for continual improvement of productivity, quality and cost.

We leverage the synergies of a professional team with a strong service intent, open communication channels and a customer-oriented approach to processes in order to provide customized solutions at the earliest. Making customer satisfaction our utmost priority and an attitude to resolve our strongest tool only helps us further strengthen our associations and establish our reliability time and again.



Chana Fastners
EXPERIENCE IMPROVED QUALITY.....

VISION

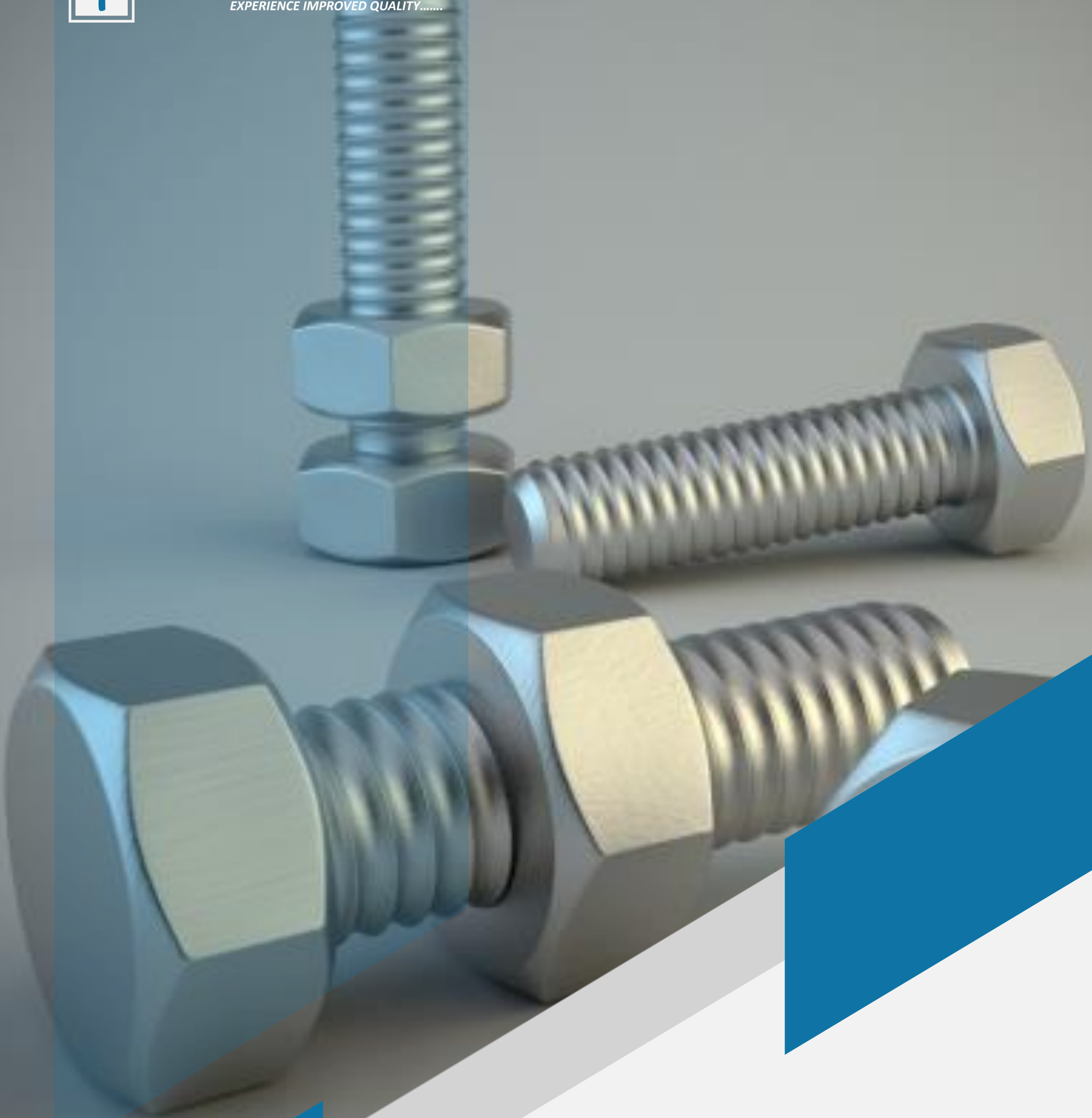
We aim to become the Global Leader in providing end-to-end solutions in Motion Control Application by becoming Competitive value added supplier of automotive parts and fasteners.

MISSION

"To be the world leader in products, services and solutions that enable and transform the way consumers and businesses gather, manage, distribute. Be the best in the eyes of our customers, employees and suppliers by providing the world class services. We help individuals and employees to achieve their goals and fulfill their responsibilities and build better tomorrows"



Chana Fasteners
EXPERIENCE IMPROVED QUALITY.....



Standard **Fasteners**

Our Product Range

BOLTS

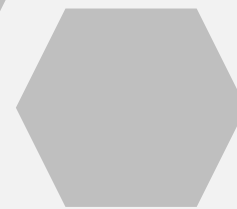


HEX BOLTS

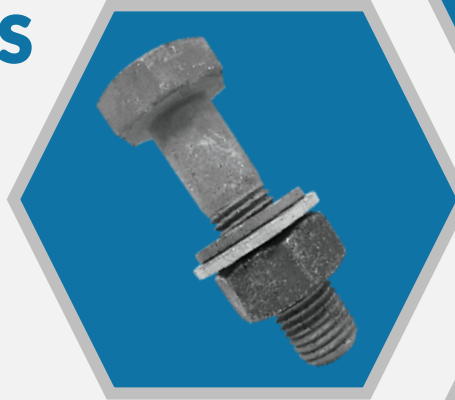


FLANGE BOLTS

CARRIAGE BOLTS



HSFG BOLTS



**HIGH TENSILE
HEX BOLTS**



**WEDGE ANCHOR
BOLTS**

SQUARE BOLTS

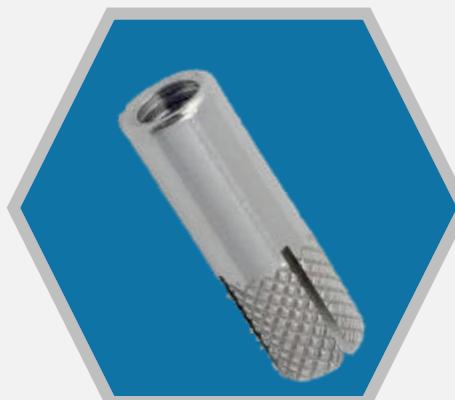


**PIN TYPE ANCHOR
BOLTS**

**EYE HOOK
ANCHOR BOLTS**



**RAWL ANCHOR
BOLTS**



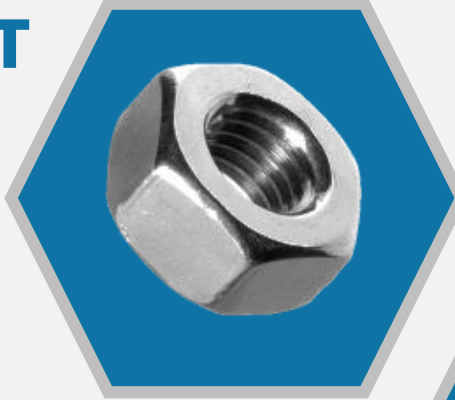
**DROP-IN
ANCHOR BOLTS**



Our Product Range

FASTENERS

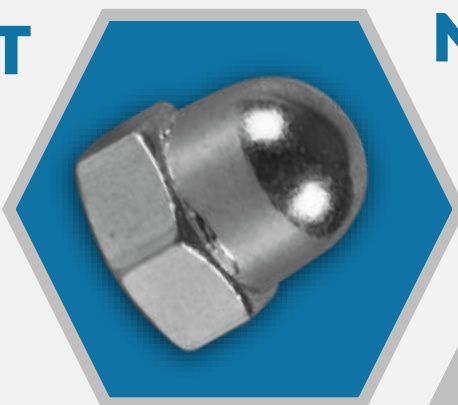
HEX NUT



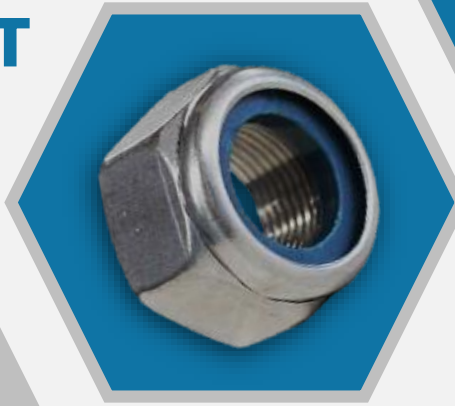
FLANGE NUT



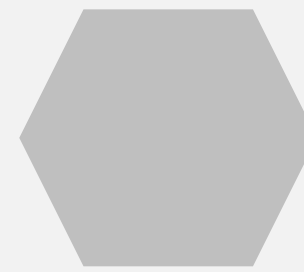
DOME NUT



NYLOCK NUT



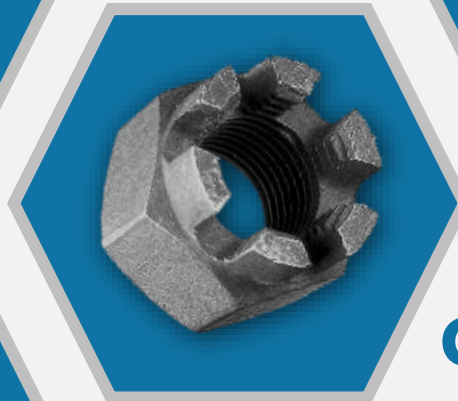
INSERT NUT



CAGE NUT



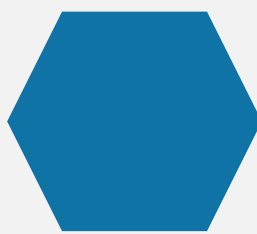
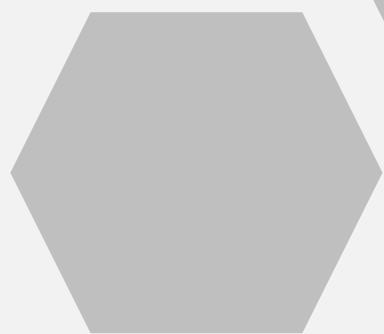
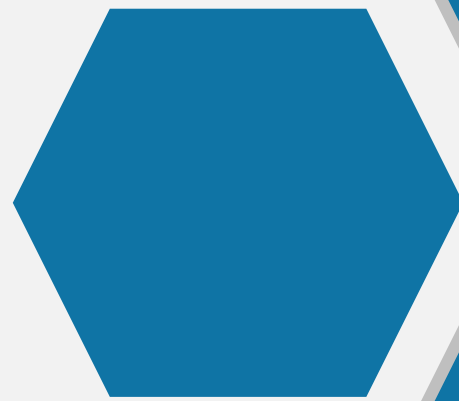
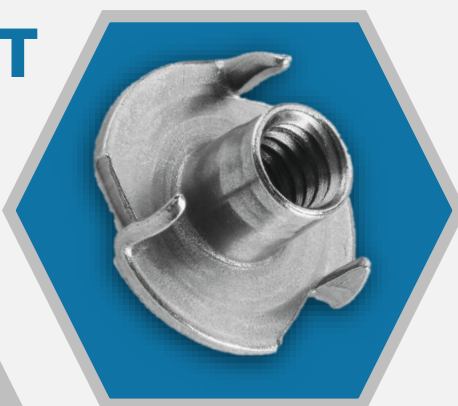
CASTLE NUT



D NUT

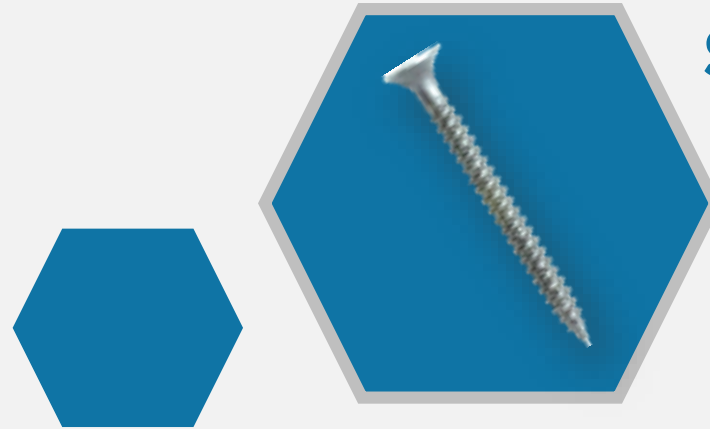


T NUT

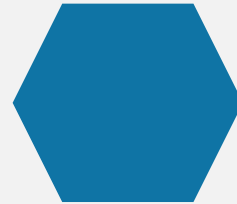


Our Product Range

SCREWS

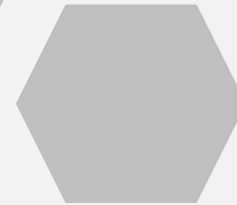


SELF TAPPING SCREW



CHIPBOARD SCREW

DRYWALL SCREW



WOOD SCREW



MACHINE SCREW



**PAN SLOTTED/
PHILLIP SCREW**



**PAN PHILLIP/
WASHER SCREW**



**CSK SLOTTED/
PHILLIP SCREW**



**ALLEN CSK
SCREW**



**BUTTON HEAD
SCREW**



**ALLEN CAP
SCREW**



**CHEESE HEAD
SCREW**



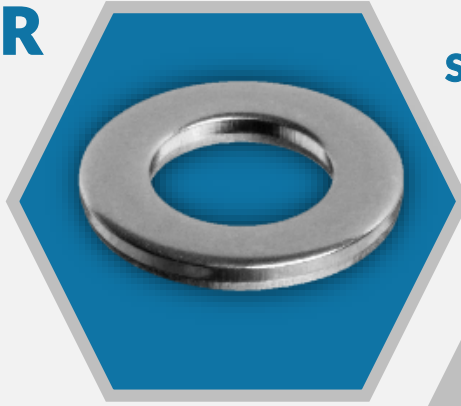
Our Product Range

OTHERS

CSK HEAD
SELF DRILLING SCREW



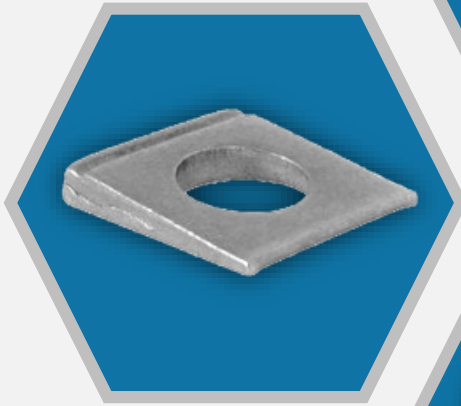
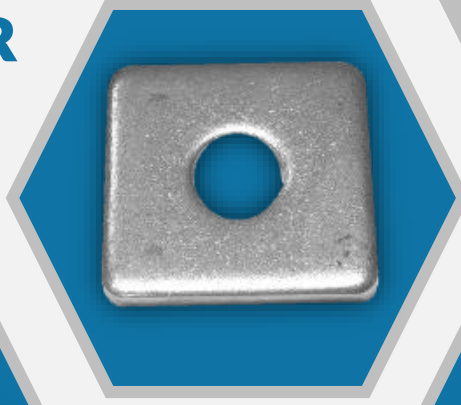
PLAIN WASHER



TRUSS HEAD
SELF DRILLING SCREWS



SQUARE WASHER



SQUARE
TAPER WASHER



SPRING WASHER

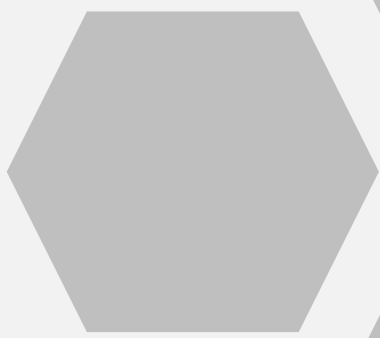
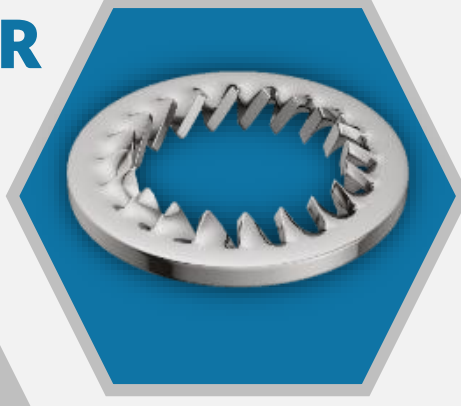


PAN HEAD
SELF DRILLING SCREWS

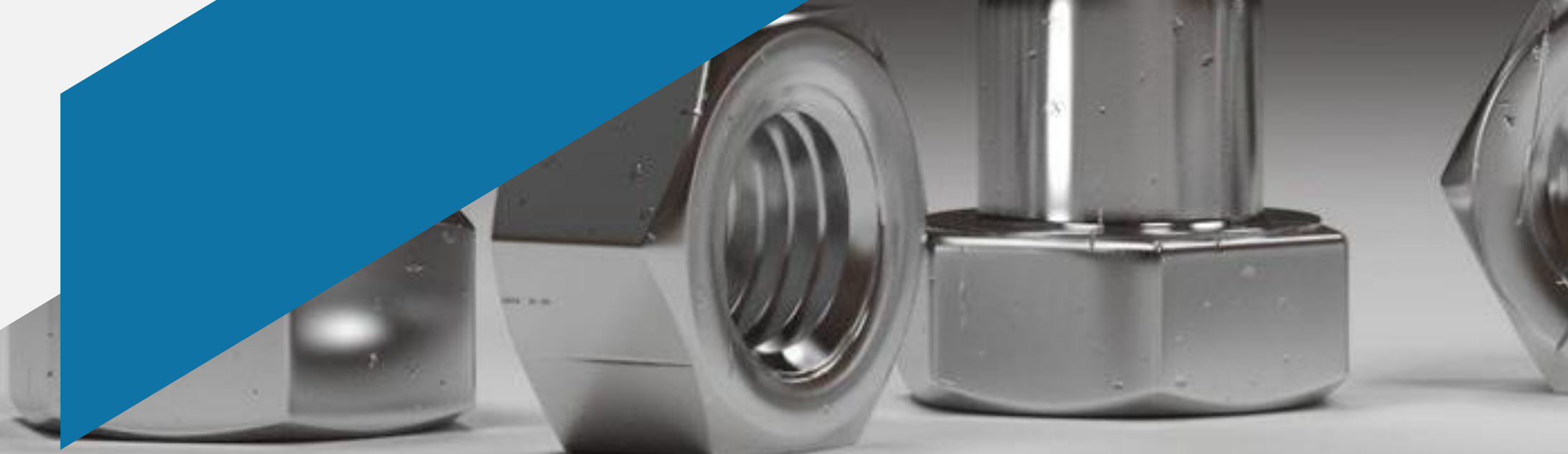
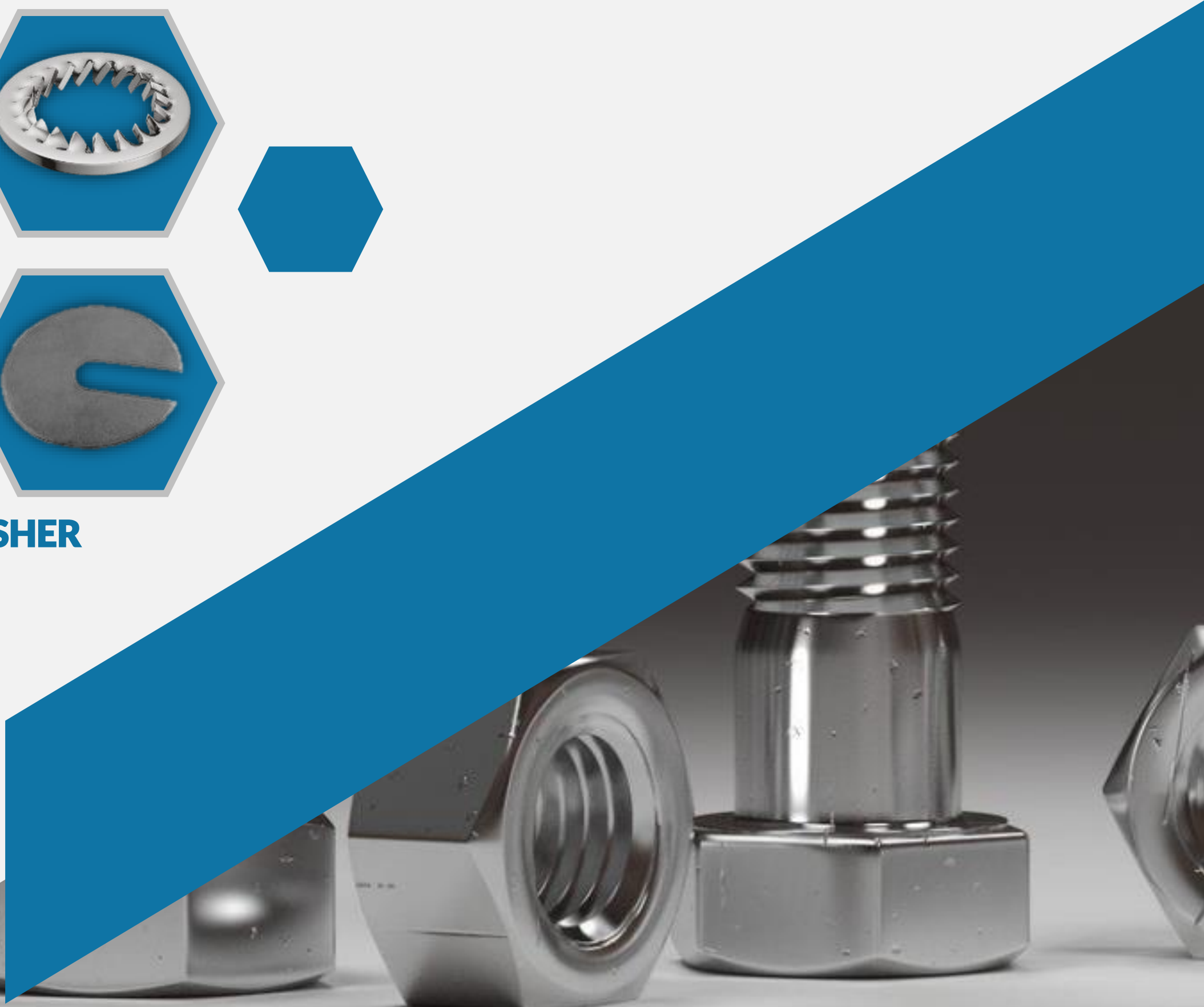
HEX HEAD
SELF DRILLING SCREW



SERRATED WASHER



SLOTTED WASHER





Chana Fasteners
EXPERIENCE IMPROVED QUALITY.....



Truck & Trailer Spare Parts

Anti-Vibration Components



ANTI-VIBRATION

Axle Components



AXLE

Hot Rod Components



HOT ROD

Automotive Fasteners



FASTENERS

Quality Policy

Customer satisfaction is our top priority and thus, the topic quality is also our top priority.

Our goal: **ZERO ERRORS.**

The following processes are in place to ensure a quality product:

- We purchase only from vendors who have a proven track record of providing high quality product.
- Lot number tracking is maintained throughout our work flow and test certificates are stored in our system.
- Our quality control system is fully documented and records are kept on all internal testing. The level of testing is determined by our acceptance of the manufacturers own quality control procedures and our historical test data.

Moreover, We are committed to providing superior quality and performance to our customers.



Chana Fasteners
EXPERIENCE IMPROVED QUALITY.....

Our International Presence



Chana Fastners
EXPERIENCE IMPROVED QUALITY.....

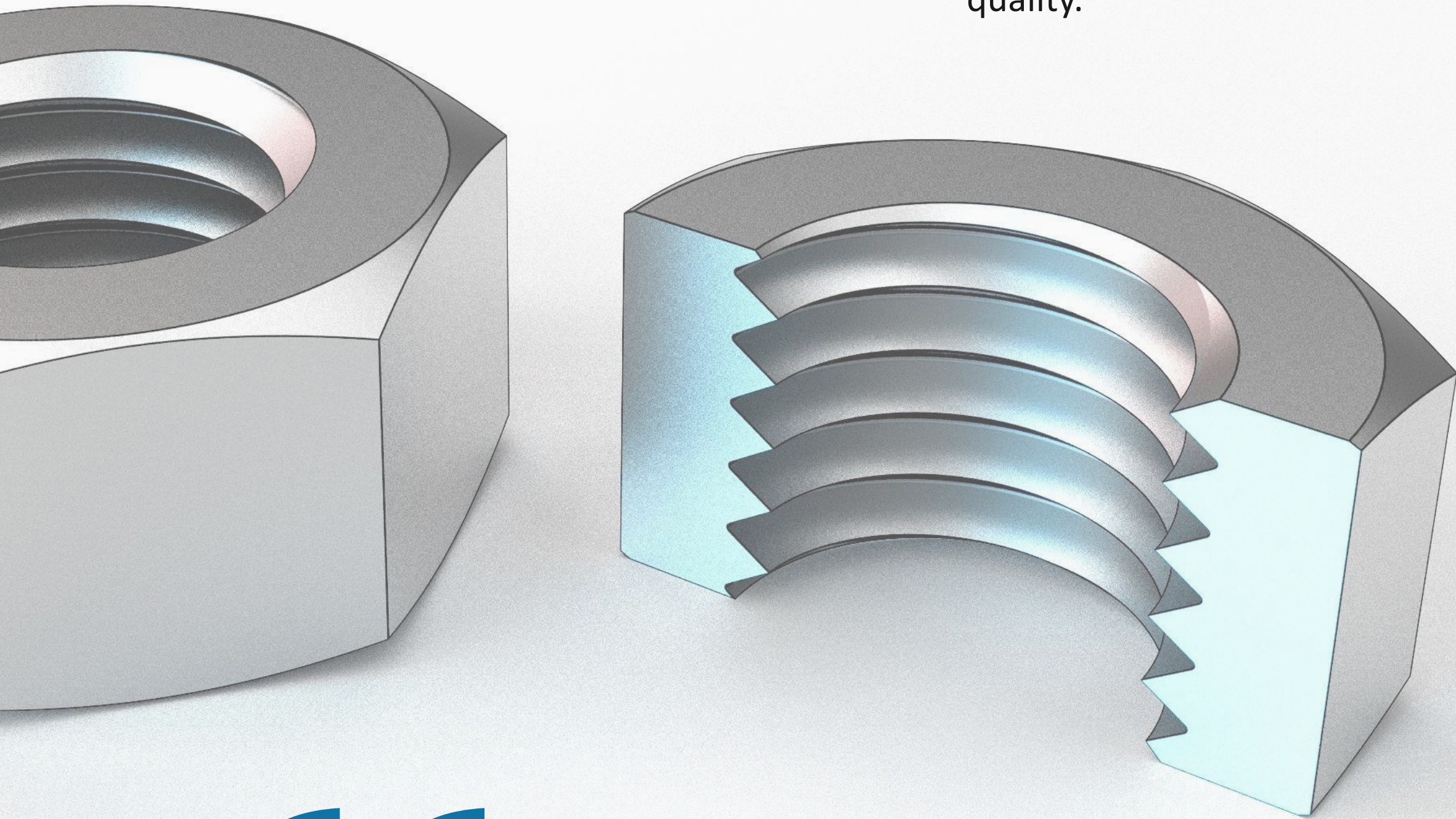


Chana Fasteners
EXPERIENCE IMPROVED QUALITY.....

Brand Promise

Chana Fasteners is name of Trust, Values & Commitment. We are focused on 4 core value i.e. Teamwork, Innovation, Customer Focus & Integrity.

Getting ahead together with our customers means developing solutions that are better, faster, more efficient and more cost-effective and hence we help our customers outperform their competition. At Shiva, we ensure utmost quality.



Work together with us to uncover the potential along the entire value chain of industrial engineering.

We look forward to speaking to you.



Chana Fasteners

EXPERIENCE IMPROVED QUALITY.....

Corporate Office

CHANA FASTNERS

📍 Plot No 878, Industrial Area - A,
RK Road, Ludhiana-141003
Punjab (INDIA).

☎ +91-78379 66330 / +91-95920 06967

✉ chanafastners@yahoo.com

🌐 www.chanafastners.com

Scan to Save

